


Exercise based cardiac rehabilitation for atrial fibrillation: Cochrane systematic review, meta-analysis, meta-regression and trial sequential analysis

Benjamin JR Buckley ^{1,2} Linda Long,³ Deirdre A Lane,² Signe Risom,⁴ Charlotte Jane Fitzhugh,¹ Selina K Berg,⁵ Pernille Palm,⁵ Kirstine L Sibillitz,⁶ Jesper H Svendsen,^{5,7} Christian Gluud,⁸ Ann-Dorthe Zwisler,⁹ Gregory Y H Lip,² Lis Neubeck,¹⁰ Rod S Taylor³

► Additional supplemental material is published online only. To view, please visit the journal online (<https://doi.org/10.1136/bjsports-2024-109149>).

For numbered affiliations see end of article.

Correspondence to
Dr Benjamin JR Buckley;
b.j.buckley@ljmu.ac.uk

Accepted 3 June 2025

ABSTRACT

Objective To undertake a contemporary review of the impact of exercise based cardiac rehabilitation (ExCR) for patients with atrial fibrillation (AF).

Data sources CENTRAL, MEDLINE, Embase, PsycINFO, CINAHL, WoS Core Collection, LILACS and trial registers were searched from inception up to 24 March 2024.

Eligibility criteria Randomised clinical trials (RCTs) comparing ExCR with any non-exercise control.

Design Random effect meta-analyses presented as effect estimates and 95% CIs. Meta-regression examined study level effect modification. Cochrane risk of bias, GRADE (Grading of Recommendations Assessment, Development and Evaluation) and trial sequential analysis (RTSA) were applied.

Results 20 RCTs (n=2039) with a mean follow-up of 11 months showed that ExCR did not impact all cause mortality (8.3% vs 6.0%, relative risk (RR) 1.06, 95% CI 0.76 to 1.48) or serious adverse events (2.9% vs 4.1%, RR 1.30, 95% CI 0.66 to 2.56) but did reduce AF symptom severity (mean difference (MD) -1.61, 95% CI -3.06 to -0.16), AF burden (MD -1.61, 95% CI -2.76 to -0.45), episode frequency (MD -0.57, 95% CI -1.07 to -0.07), episode duration (MD -0.58, 95% CI -1.14 to -0.03), AF recurrence (RR 0.68, 95% CI 0.53 to 0.89), and improved exercise capacity (maximal oxygen consumption (VO₂ peak) MD 3.18, 95% CI 1.05 to 5.31 mL/kg/min). There was benefit for the mental component but not the physical component of a health related quality of life questionnaire. No differential effects across AF subtype, ExCR dose, or mode of delivery were seen.

Conclusion Meta-analyses of RCT evidence for ExCR in patients with AF demonstrated several clinical benefits without an increase in serious adverse events. GRADE and RTSA assessments indicated further high quality and adequately powered RCTs are needed.

INTRODUCTION

Atrial fibrillation (AF) is the most frequent cardiac arrhythmia. It has been estimated that 6–12 million people will develop this condition in the US by 2050 and 17.9 million in Europe by 2060.¹ AF is a major risk factor for ischaemic stroke and constitutes an important economic burden, along with significant morbidity and mortality.¹

Although current medical treatments are effective in controlling symptoms and the risk of stroke

WHAT IS ALREADY KNOWN ON THIS TOPIC

⇒ Exercise based cardiac rehabilitation (ExCR) has shown improvements in functional capacity and quality of life in other cardiac conditions, such as heart failure and coronary artery disease.

WHAT THIS STUDY ADDS

⇒ Previous studies on atrial fibrillation (AF) have been inconclusive, and ExCR is not currently indicated for AF patients.
⇒ The 2017 Cochrane review identified limited RCT evidence, showing some improvements in exercise capacity for AF patients but uncertainty about broader benefits.

HOW THIS STUDY MIGHT AFFECT RESEARCH, PRACTICE OR POLICY

⇒ This updated Cochrane review with 20 RCTs shows that ExCR reduces AF recurrence, symptom severity, burden and episode frequency.
⇒ ExCR improves exercise capacity (VO₂ peak) and the mental component of the health related quality of life questionnaire, but not the physical component.
⇒ No significant impact of ExCR on all cause mortality or serious adverse events was found, and further well powered studies are needed for these outcomes.

in AF, the addition of patient self-management interventions are potentially key to the management of arrhythmia progression, maintaining functional capacity and health related quality of life (HRQoL).^{2,3} Exercise based cardiac rehabilitation (ExCR) is a complex, comprehensive intervention that includes exercise training alongside personalised lifestyle risk factor management, psychosocial intervention, medical risk management and health behaviour education.^{4–6} Based on a strong body of randomised clinical trial (RCT) evidence demonstrating improvements in functional capacity, HRQoL and reductions in the risk of hospitalisation and associated healthcare costs, ExCR has level I, grade A recommendation for patients following myocardial infarction, percutaneous coronary intervention and heart failure.^{5,7,8} As the benefits of exercise for people with AF have been unclear,



► <http://dx.doi.org/10.1136/bjsports-2025-110191>



© Author(s) (or their employer(s)) 2025. No commercial re-use. See rights and permissions. Published by BMJ Group.

To cite: Buckley BJR, Long L, Lane DA, et al. *Br J Sports Med* Epub ahead of print: [please include Day Month Year]. doi:10.1136/bjsports-2024-109149

current international guidelines for the management of AF do not recommend participation in ExCR.^{2,9}

Our Cochrane review published in 2017 identified six RCTs of ExCR versus no exercise controls in 421 participants with AF.¹⁰ While showing improvements in functional capacity, the impact of ExCR on participant reported outcomes and clinical events was uncertain, and further trials were needed. Since this review, several additional RCTs have been published.¹¹ The aim of this study was to undertake a contemporary systematic review with meta-analysis and trial sequential analysis (RTSA) to update the evidence base on the impact of ExCR for participants with AF.

METHODS

This systematic review with meta-analyses, meta-regression and trial sequential analysis was conducted and reported in accordance with the Cochrane Handbook for Interventional Reviews and the Preferred Reporting Items for Systematic Reviews and Meta-Analyses (PRISMA).^{12,13} The following electronic databases were searched from inception up to 24 March 2024, to identify reports of relevant RCTs: Cochrane Central Register of Controlled Trials (CENTRAL), MEDLINE, Embase, PsycINFO, CINAHL, Web of Science Core Collection and LILACS. The full search strategy is provided in the online supplemental file S1. Reference lists of included studies were checked for any unidentified RCTs. No language restrictions were imposed.

Study selection

Reviewers (BJB, LL, SR, DAL and RST) independently screened all titles, abstracts and full text material in duplicate to select studies that met the following eligibility criteria: (1) RCTs regardless of language, publication year, type or status; (2) adult participants with AF, or treated for AF (ie, cardioversion, catheter ablation, etc) were considered for inclusion; (3) exercise based interventions were defined as: any rehabilitation programme in an inpatient, outpatient, community or home based setting. The rehabilitation programme must have included an exercise training component and may also have included a psycho-educational component (comprehensive rehabilitation). There were no restrictions in the length, intensity or content of the exercise training programme; (4) controls could include treatment as usual (eg, standard medical care, such as drug, cardioversion and ablation therapy), no intervention or any other type of cardiac rehabilitation programme or risk factor management, if it did not include exercise training; (5) trials with co-interventions other than rehabilitation (eg, drug treatment, ablation or diet) were permitted if they were delivered equally in the experimental and control groups; and (6) primary outcomes included clinical events: all cause and cardiovascular mortality, serious adverse events as defined in the individual trials which typically included any untoward medical occurrence, any medical event that had jeopardised the patient or required intervention to prevent it, any hospital admission or prolongation of existing hospital admission; AF recurrence and burden (recurrence or amount of AF measured via ECG, Holter, smart wearable or hand held device); AF symptom severity and burden: the impact of AF on individuals with AF was measured with validated questionnaires, for example, the European Heart Rhythm Association score and atrial fibrillation severity scale (AFSS). Secondary outcomes included HRQoL (using generic or disease specific validated instruments, eg, Short Form-36 (SF-36), AF effect on quality of life questionnaire (AFEQT)) and exercise capacity (any measure of exercise capacity, including direct measurement of

oxygen uptake (VO_2 peak) or indirect measures, such as submaximal exercise capacity tests and walking distance (eg, 6 min walk test (6MWT)). Full text copies of all potentially relevant studies were retrieved and independently assessed for eligibility. The authors resolved disagreements by discussion, and when necessary, a third author mediated. The study selection process was documented using a PRISMA flowchart.

Data extraction and quality appraisal

Two authors (from BJB, LL, SR and DAL) independently extracted data and assessed risk of bias from the identified trials using standardised data extraction forms. Data were transferred into Cochrane's Review Manager (RevMan Web) and R.¹⁴ When insufficient data were published, authors were contacted to provide missing data. We assessed all outcomes at two time points: end of intervention (as defined by the trialists) and longest available follow-up. There was no minimum length of follow-up in the eligibility criteria. Risk of bias was assessed using Cochrane's RoB one tool plus four additional domains (online supplemental file S2).¹² Because all trials would be categorised as having an overall high risk of bias given it is not possible to blind participants and personnel to ExCR, trials were categorised as lower risk of bias if rated low risk in all domains except blinding of participants and personnel.^{15,16}

Statistical analysis

Dichotomous outcomes were expressed as a relative risk (RR) with 95% CIs. Continuous outcomes were expressed as a mean difference (MD) between intervention groups. When studies used different instruments to assess the same outcome (eg, quality of life or exercise capacity), pooled effect sizes using standardised mean difference (SMD) were calculated. Where mean and SD values were missing, they were sought directly from the trial authors. Where SDs were not presented, they were calculated from 95% CIs or IQR following Cochrane guidance.

Clinical heterogeneity was explored by comparing the population, experimental intervention and control arm. Statistical heterogeneity was investigated by visual inspection of forest plots, χ^2 (significance level $p=0.10$) and I^2 statistic ($\geq 50\%$ and a statistically significant χ^2 statistic were deemed evidence of substantial heterogeneity).¹² Funnel plots and Egger tests were used to assess potential small study effects and publication bias.¹² Data were pooled from each study using random effect models, which provide more conservative effect estimates. Where trial size permitted, univariate meta-regression was used to explore between trial heterogeneity. All statistical analyses were performed with R.¹⁴ GRADE (Grading of Recommendations Assessment, Development and Evaluation)¹⁷ and trial sequential analysis (RTSA: <https://CRAN.R-project.org/package=RTSA>)¹⁸ were used to interpret the certainty of the results.

Equity, diversity and inclusion statement

In this Cochrane review, we included participants from a variety of geographic regions, including Europe, Asia, Australia, and North and South America. However, most trials were conducted in Europe, and most participants were men (73%), with a mean age of 63 years. This may limit the generalisability of the findings to more diverse populations, particularly under-represented ethnic groups and women.

The investigator team consisted of researchers from multiple countries and included individuals with diverse academic backgrounds and career stages. We did not specifically aim to recruit investigators based on gender or other characteristics but aimed

to bring together a multidisciplinary and geographically diverse team to enhance the breadth of perspectives.

In the meta-regression analysis, we explored any impact on outcomes by sex, age, geographic region and AF subtype, and found no significant impact of these covariates. Future research should prioritise the collection of such data to allow for a more equitable and comprehensive analysis of outcomes.

RESULTS

Study selection

The electronic searches for this update gave a total of 6063 titles and abstracts, of which 4538 unique records were eligible for screening, resulting in 51 full text reports assessed for inclusion. A total of 30 studies were excluded. In this review update, we included 14 new RCTs (represented by 15 reports) and one new report of a previously included trial, resulting in 20 RCTs (26 reports). The study selection process is summarised in figure 1. A summary of the included trial characteristics is presented in

table 1. Details of excluded trial characteristics can be found within the Cochrane review.¹⁰

Characteristics of included trials and participants

The 20 included trials randomised 2039 participants with AF. All trials were conducted between 2006 and 2024, and most were small with a single centre design. Ten trials were conducted in Europe,^{19–28} four in Asia,^{29–32} two in Australia,^{33–34} one each in Brazil,³⁵ Canada³⁶ and Russia,³⁷ and one multi-country trial.³⁸

Follow-up periods ranged from 8 weeks to 5 years; nine trials reported follow-up <6 months,^{21–24 26–28 30 35} six trials reported follow-up of 6–12 months^{20 29 31 32 34 36 37} and four trials reported follow-up of >12 months.^{19 25 33 38} Four trials included participants with paroxysmal AF,^{26 27 36 37} nine trials included persistent or sustained (paroxysmal and persistent) AF,^{19 20 22 25 29 31–34} six trials included permanent AF^{21 23 24 28 30} and one trial was mixed/not defined.³⁸ Seven trials included participants with symptomatic AF.^{22 25 26 29 33 34 37} The mean percentage of male participants

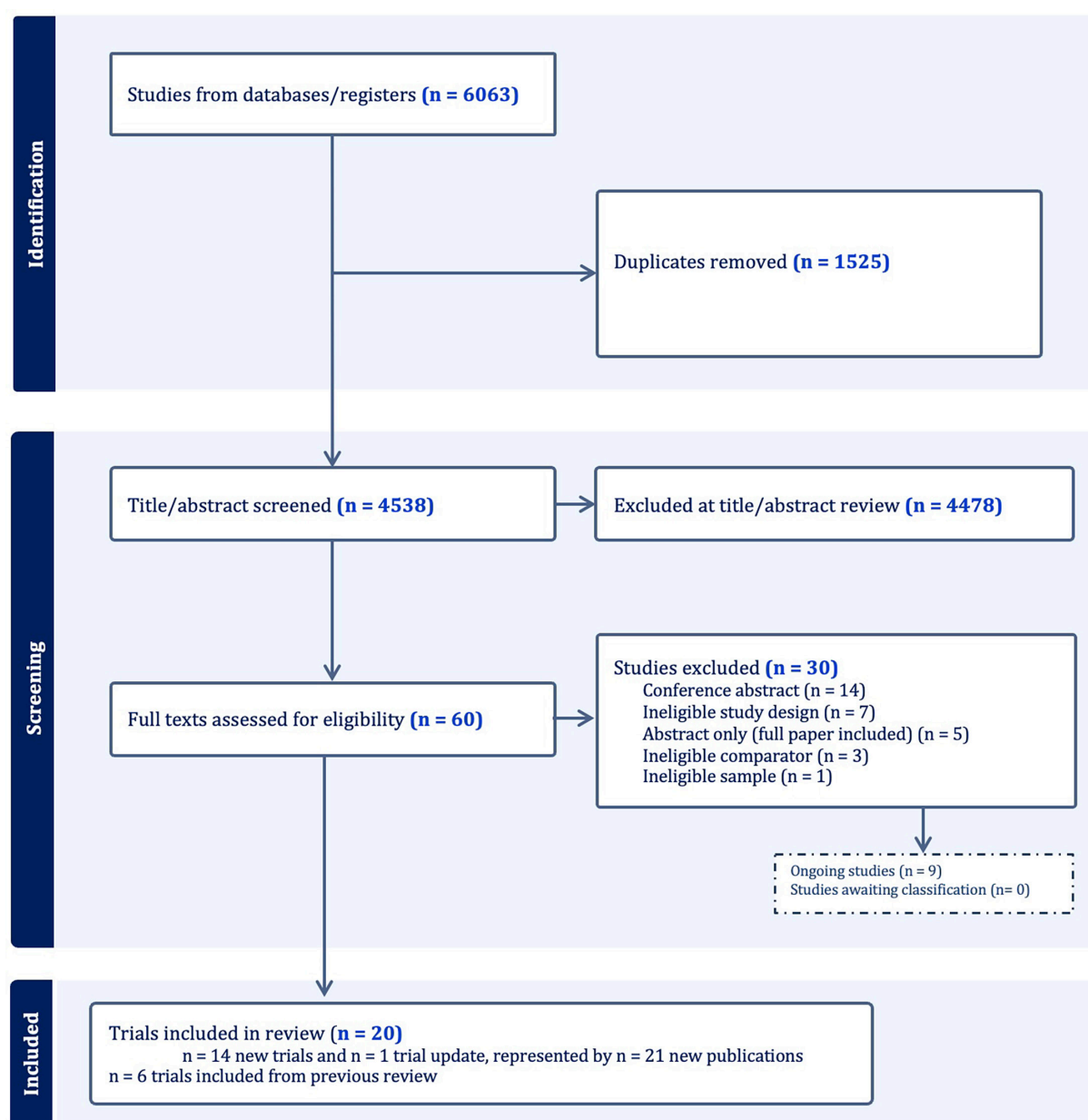


Figure 1 Preferred Reporting Items for Systematic Reviews and Meta-Analyses (PRISMA) flow diagram for selection of studies.

Table 1 Summary of trial, population and intervention characteristics of included trials

Characteristics	No of studies (%) or median (range)
Trial	
Publication year	
2000–09	2 (10)
2010–19	10 (50)
2020 onwards	8 (40)
Study continent	
Europe	11 (55)
Asia	4 (20)
America	2 (10) (1 North, 1 South)
Australia	2 (10)
Other/mixed	1 (5)
Single centre	17 (85)
Sample size (median (range))	68 (30–382)
Follow-up duration (range)	2 months to 5 years
Population characteristics	
% of men (median (range))	72 (46–100)
Age (years) (median (range))	63 (56–71)
AF subtype	
Paroxysmal	4 (20)
Persistent	2 (10)
Sustained (paroxysmal+persistent)	7 (35)
Permanent	6 (30)
Mixed/NR	1 (5)
Received catheter ablation+ExCR	6 (30)
Intervention characteristics	
Intervention type	
Exercise only	15 (75)
Comprehensive programme	5 (25)
Intervention dose	
Duration (weeks) (median (range))	12 (8–52)
Frequency (sessions/week) (median (range))	3 (1–7)
Length (min/session) (median (range))	40 (15–90)
Intensity	
Light	5 (25)
Moderate	11 (55)
Vigorous	4 (20)
Setting	
Centre based only	8 (40)
Home based only	7 (35)
Hybrid (combination of centre and home based)	5 (25)
Values are number (%) of studies, unless indicated otherwise.	
AF, atrial fibrillation; ExCR, exercise based cardiac rehabilitation; NR, not reported.	

across studies was 73% (range 46–100%) and mean age was 63 (range 56–71) years.

Five trials assessed comprehensive ExCR, which included educational and/or psychological intervention components,^{19 20 25 33 36} with the remaining 15 RCTs comparing exercise only cardiac rehabilitation versus control. All trials used a no formal exercise training control arm with a range of active components, including education, psychological intervention and usual medical care (ie, pharmacology and ablation procedures). Eight trials tested purely centre based rehabilitation,^{21–24 32 33 35 38} seven were remote^{19 20 26–28 30 37} and five were hybrid (combination of centre and remote).^{25 29 31 34 36}

The exercise training interventions differed in duration (8–24 weeks), frequency (1–7 sessions per week), session length (15–90 min per session) and intensity. Intensity of aerobic exercise training was prescribed in a variety of ways, including percentage heart rate max, percentage peak exercise capacity and rating of perceived exertion. Five trials were of overall light aerobic intensity,^{24 26–28 33} 11 moderate intensity^{19 21 23 25 29–31 35–38} and three vigorous intensity.^{20 22 34} Six of the trials included aerobic and resistance based exercise training,^{21 25 29 31 35 36} while the remaining 15 trials included aerobic exercise training only. Of the aerobic based exercise training interventions, one trial consisted of Qi-gong (slow and graceful movements with a focus on breathing),²⁴ one inspiratory muscle training²⁸ and two were yoga-based interventions.^{26 27}

Risk of bias and GRADE assessment

The overall risk of bias was mixed for included trials (online supplemental figure S1 and S2). Details of random sequence generation, allocation concealment and use of intention to treat analyses were typically poorly reported. However, reporting bias, groups balanced at baseline, performance bias and for-profit bias were typically well reported and at low risk of bias. Due to the nature of ExCR trials, participant blinding was not possible. Weak evidence of funnel plot asymmetry may be present for exercise capacity measures (VO₂peak and 6MWT). No other outcomes demonstrated clear asymmetry or significant Egger's tests (online supplemental file S2, figures S2–S13).

Outcomes

A summary of the findings with up to 12 months of follow-up is presented in table 2. GRADE assessments for certainty of evidence across all outcomes ranged from very low to moderate certainty. Evidence for downgrading of each outcome is presented in table 2. Results from RTSA are provided throughout the results and summarised in table 3. RTSA figures are provided in online supplemental file 4, online supplemental figures S17–S26).

All cause mortality

Nine trials (n=1173 participants) reported all cause mortality as an outcome.^{19 21–25 28 32 34 38} Three trials contributed to the effect estimate^{19 25 38} because the remaining studies reported zero events in each arm. There was no difference in mortality between ExCR versus controls (RR 1.06, 95% CI 0.76 to 1.48; RTSA CI 0.03 to 31.43; studies=9; I²=0%; figure 2a). We assessed the evidence for mortality to be of low certainty using GRADE.

Serious adverse events

Ten trials (n=825 participants) reported serious adverse events.^{20–25 29 32 34 35} Six trials contributed to the effect estimate^{22–25 29 34 36} because the remaining four studies reported zero events in each arm. There was no difference in serious adverse events between ExCR and controls (RR 1.30, 95% CI 0.66 to 2.56; RTSA CI 0.00 to >100; studies=10; I²=0%; figure 2b). Evidence for serious adverse events was assessed as very low certainty.

AF recurrence

Four trials (n=378) reported AF recurrence dichotomously, measured with Holter monitors worn for various lengths of time.^{29 33 34 37} Moderate certainty of evidence demonstrated a benefit of ExCR versus controls (RR 0.68, 95% CI 0.53 to 0.89; RTSA CI –0.33 to 1.29; I²=0%; figure 3).

Table 2 Summary of findings

Outcomes	Anticipated absolute effects* (95% CI)		Relative effect (95% CI)	No of participants (studies)	Quality of evidence (GRADE)	Comments
	Risk with no exercise	Risk with exercise				
Mortality Follow-up: 2–60 months	80 per 1000	88 per 1000 (63 to 124)	RR 1.06 (0.76 to 1.48)	1173 (9 RCTs)	⊕⊕⊕⊖ Low	ExCR had little to no impact on all cause mortality. Several studies had no events in either the intervention or control arm. Studies were downgraded due to risk of bias and imprecision
Serious adverse events Follow-up: 2–12 months	30 per 1000	41 per 1000 (20 to 85)	RR 1.30 (0.66 to 2.56)	825 (10 RCTs)	⊕⊕⊕⊖ Low‡	ExCR had little to no impact on serious adverse events. Several studies had no events in either the intervention or control arm. Studies were downgraded due to risk of bias, inconsistency and imprecision
AF recurrence assessed with Holter monitors Follow-up: 3–12 months	460 per 1000	322 per 1000 (258 to 405)	RR 0.68 (0.53 to 0.89)	378 (4 RCTs)	⊕⊕⊕⊖ Moderate§	ExCR likely reduced AF recurrence in the short term (up to 12 months). Studies were downgraded due to risk of bias
AF symptom severity assessed with AFSS, lower=better Follow-up: 3–12 months	Mean AF symptom severity in the control groups was 7.1 points	Mean AF symptom severity in the exercise groups was 1.6 points lower (3.0 to 0.2 lower)		600 (5 RCTs)	⊕⊕⊕⊖ Low¶	ExCR may have reduced AF symptom severity in the short term (up to 12 months). Studies were downgraded due to risk of bias and inconsistency
AF burden assessed with AFSS, lower=better Follow-up: 3–12 months	Mean AF burden in the control groups was 14.3 points	Mean AF burden in the exercise groups was 1.6 points lower (2.8 to 0.5 lower)		317 (3 RCTs)	⊕⊕⊕⊖ Moderate**	ExCR likely reduced AF burden in the short term (up to 12 months). Studies were downgraded due to risk of bias
Quality of life assessed with SF-36 MCS scale (0–100), higher=better Follow-up: 20 weeks to 12 months	Mean quality of life in the control groups was 48.5 points	Mean quality of life in the exercise groups was 2.7 points higher (1 to 4.5 higher)		504 (6 RCTs)	⊕⊕⊕⊖ Moderate††	ExCR probably improved the mental components of health related quality of life in the short term (up to 12 months). Studies were downgraded due to risk of bias
Quality of life assessed with SF-36 PCS scale (0–100), higher=better Follow-up: 20 weeks to 12 months	Mean quality of life in the control groups was 42.5 points	Mean quality of life in the exercise groups was 1.8 points higher (0.2 lower to 3.7 higher)		504 (6 RCTs)	⊕⊕⊕⊖ Very low‡‡	It is unclear about the effect of ExCR on the physical components of health related quality of life in the short term (up to 12 months). Studies were downgraded due to risk of bias, inconsistency and imprecision

Patient or population: adults with atrial fibrillation. Setting: in hospital, community centres, and home based. Intervention: ExCR. Comparison: non-exercise controls.

*The risk in the intervention group (and 95% CI) is based on the assumed risk in the comparison group and the relative effect of the intervention (with 95% CIs).

†Downgraded by one level for serious risk of bias (most weighted trial (97%) was deemed high risk of intention to treat) and by one level for serious imprecision (low event rate for precision (<300 events; n=101) and wide 95% CIs including both benefit and harm).

‡Downgraded by one level for serious risk of bias, and by one level for serious imprecision. Largest (and most influential trial) had crucial attrition bias. Low event rate for precision (<300 events; n=38) and wide 95% CIs including both benefit and harm.

§Downgraded by one level for serious risk of bias and by one level for inconsistency. Crucial risk of bias for at least one criterion across all trials (participant blinding). Outcome measure is a PRO. Substantial statistical heterogeneity (χ^2 p=0.04, I^2 =61%).

¶Downgraded by one level for serious risk of bias and by one level for inconsistency. Crucial risk of bias for at least one criterion across all trials (participant blinding). Outcome measure is a PRO. Substantial statistical heterogeneity (χ^2 p=0.04, I^2 =61%).

**Downgraded by one level for serious risk of bias. Crucial risk of bias for at least one criterion across all trials (participant blinding). Outcome measure is a PRO.

††Downgraded by one level for serious risk of bias. Crucial risk of bias for at least one criterion across all trials (participant blinding). Outcome measure is a PRO.

‡‡Downgraded by one level for serious risk of bias, by one level for serious inconsistency and by one level for serious imprecision. Crucial risk of bias for at least one criterion across all trials (participant blinding). Outcome measure is a PRO. Substantial statistical heterogeneity (χ^2 p=0.06, I^2 =52%). Summary effect estimate is largely positive, although includes no effect. Therefore, imprecision may be a serious issue.

AF, atrial fibrillation; AFSS, atrial fibrillation symptom severity questionnaire; ExCR, exercise based cardiac rehabilitation; GRADE, Grading of Recommendations Assessment Development and Evaluation (a systematic approach to rating the certainty of evidence); PRO, patient reported outcome; RCT, randomised controlled trial; RR, risk ratio; SF, short form.

AF symptom severity

Five trials reported AFSS,^{19 22 33 34 36} although not all trials contributed to all components. AF symptom severity (GRADE: low certainty of evidence) demonstrated a benefit for ExCR versus controls (MD −1.61, 95% CI −3.06 to −0.16; RTSA CI −3.94 to 0.76; participants=600; studies=5; I^2 =61%; [figure 4a](#)); AF burden had a moderate certainty of evidence and demonstrated a benefit for ExCR versus controls (MD −1.61, 95% CI −2.76 to −0.45; RTSA CI −2.74 to −0.44;

participants=317; studies=3; I^2 =0%; [figure 4b](#)); AF episode frequency had a low certainty of evidence and demonstrated a benefit for ExCR versus controls (MD −0.57, 95% CI −1.07 to −0.07; RTSA CI −1.27 to −0.13; participants=368; studies=3; I^2 =0%; [figure 4c](#)); AF episode duration had a moderate certainty of evidence and demonstrated a benefit for ExCR versus controls (MD −0.58, 95% CI −1.14 to −0.03; RTSA CI −1.36 to 0.19; participants=317; studies=3; I^2 =0%; [figure 4d](#)).

Table 3 RTSA: trial sequential analysis findings

Analysis	Method	AIS	DARIS (D ²)	Random effects CI	RTSA adjusted CI	Conclusion
Primary outcomes						
1.1 All cause mortality	20% RRR Random effects Alpha 1.25% Beta 10% Two sided analytic RTSA	1173	13 354 (0%)	0.76 to 1.48	0.03 to 31.43	More trials warranted
1.2 Serious adverse event	20% RRR Random effects Alpha 1.25% Beta 10% Two sided analytic RTSA	825	35 191 (0%)	0.66 to 2.56	0.00 to >100	More trials warranted
1.3 AF recurrence	RRR 20% Random effects Alpha 1.25% Beta 10%	378	1 636 (0%)	0.53 to 0.89	0.33 to 1.29	More trials warranted
1.4 AFSS symptom severity	MCID 2 (SD 5) Random effects Alpha 1.25% Beta 10% Two sided analytic RTSA	600	952 (68%)	−3.06 to −0.16	−3.94 to 0.76	More trials warranted
1.5 AFSS burden	MCID 2 (SD 5) Random effects Alpha 1.25% Beta 10% Two sided analytic RTSA	317	365 (0%)	−2.76 to −0.45	−2.74 to −0.44 (SW adjusted)	More trials warranted
1.6 HRQoL MCS	MCID 3 (SD 12) Random effects Alpha 1.25% Beta 10%	504	455 (7%)	0.89 to 4.45	1.21 to 4.14 (RTSA naive CI)	More trials warranted
1.7 HRQoL PCS	MCID 3 (SD 12) Random effects Alpha 1.25% Beta 10%	504	1 153 (65%)	−0.17 to 3.71	−2.46 to 5.96	More trials warranted
Secondary outcomes						
1.8 AFSS episode frequency	MCID 3 (SD 6) Random effects Alpha 1.25% Beta 10% Two sided analytic	317	365 (0%)	−1.07 to −0.07	−1.27 to 0.13	More trials warranted
1.9 AFSS episode duration	MCID 3 (SD 6) Random effects Alpha 1.25% Beta 10% Two sided analytic	317	365 (0%)	−1.14 to −0.03	−1.36 to 0.19	More trials warranted
1.10 Cardiorespiratory fitness (VO ₂ peak)	MCID 2 (SD 6) Random effects Alpha 1.25% Beta 10%	791	10 749 (98%)	1.05 to 5.31	−24.52 to 29.66	More trials warranted

RTSA was conducted in RStudio with the meta-analytical data conducted using meta and metafor packages. RTSA was conducted using the RTSA package in RStudio with the following protocol: type=analysis, outcome=RR, two-sided alpha corrected via modified Bonferroni adjustment, beta=0.1, alpha and beta spending boundaries=Lan & DeMets version of O'Brien–Fleming boundaries, minimum clinically important difference=0.8 for binary outcomes (mortality, serious adverse event and AF recurrence), 3 points for AFSS, 5 points for HRQoL, and 2 mL/kg/min for VO₂ peak. It was not possible to calculate RTSA adjusted CIs for several measures.

AF, atrial fibrillation; AFSS, atrial fibrillation symptom severity questionnaire; AIS, achieved information size; DARIS, diversity adjusted required information size; HRQoL, health related quality of life; MCID, minimum clinically important difference; MCS, mental component scale; PCS, physical component scale; RRR, relative risk reduction; RTSA, RStudio trial sequential analysis; SW adjusted, standardised weights adjusted; VO₂, maximal oxygen consumption.

Health related quality of life

Fourteen trials included a validated HRQoL measure (online supplemental file S3). Eleven trials reported the SF-36, four reported the Minnesota Living with Heart Failure questionnaire, two reported the disease specific AF effect on quality of life questionnaire (AFEQT), one reported the Kansas City

Cardiomyopathy Questionnaire, one reported the disease specific AF-QoL, one reported the EQ-VAS (EuroQol Visual Analogue Scale) and one reported the EQ-5D (EuroQol 5-Dimension). As most trials reported the SF-36, this measure was meta-analysed. SF-36 mental component summary measure had a moderate certainty of evidence and demonstrated a benefit

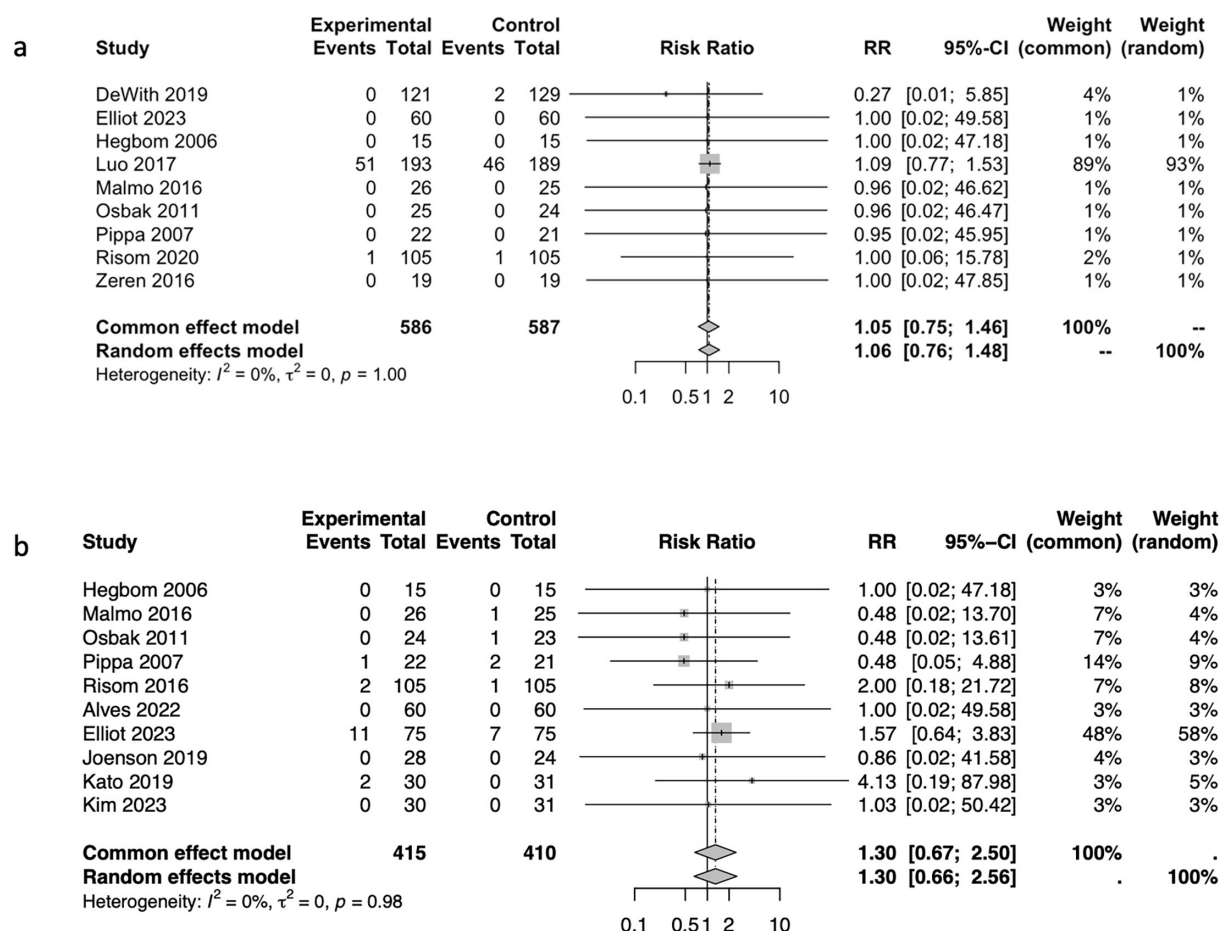


Figure 2 Forest plot: effects of exercise based cardiac rehabilitation versus control for all cause mortality (a) and serious adverse events (b) in patients with atrial fibrillation.

of ExCR versus controls (MD 2.67, 95% CI 0.89 to 4.45; RTSA naive CI: 1.14 to 4.14; participants=504; studies=6; $I^2=2\%$; figure 5a). SF-36 physical component summary measure had a very low certainty of evidence and demonstrated no clear difference between ExCR versus controls (MD 1.77, 95% CI -0.17 to 3.71; RTSA CI -2.46 to 5.96; participants=504; studies=6; $I^2=52\%$; figure 5).

Exercise capacity

Exercise capacity was reported as VO_2 peak and 6MWT, measured for up to 12 months of follow-up. Low certainty of evidence demonstrated a benefit of ExCR on VO_2 peak versus controls (MD 3.18, 95% CI 1.05 to 5.31; RTSA CI -24.52 to 29.66; participants=791; studies=7; $I^2=91\%$; figure 6).

Meta-analyses for 6MWT and the pooled SMD effect estimate of VO_2 peak and 6MWT are presented in the online supplemental file S4. The SMD for exercise capacity was used for meta-regression due to having the largest sample size.

Meta-regression

Due to limitations in the number of included trials and outcomes reported, we were only able to investigate potential trial level moderators of ExCR effects for serious adverse events and exercise capacity (SMD) for up to 12 months of follow-up. The only significant associations were in exercise capacity, where smaller improvements were seen in trials with longer follow-up ($p=0.019$) and larger improvements were seen in

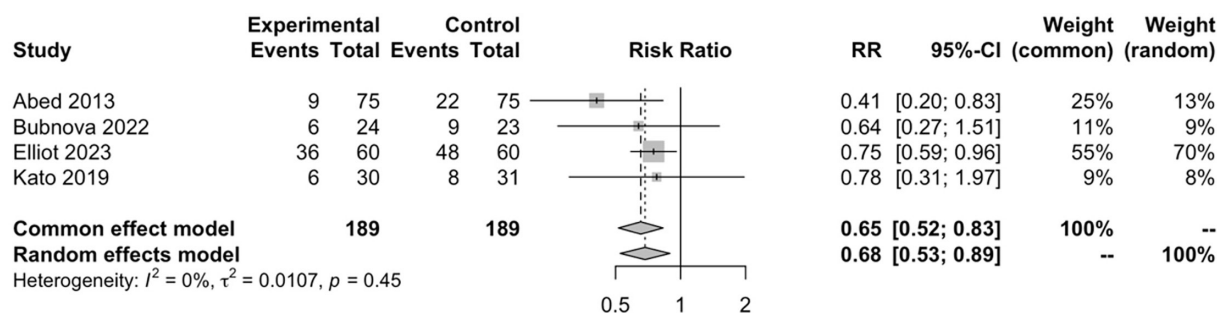


Figure 3 Forest plot: effects of exercise based cardiac rehabilitation versus control for recurrence of atrial fibrillation (AF) measured via Holter monitoring in patients with AF.

trials conducted in South America ($p=0.029$) (table 4 and online supplemental file, figure S16).

DISCUSSION

This Cochrane systematic review and meta-analysis, including meta-regression and RTSA, incorporated data from 20 RCTs in 2039 participants with AF. Compared with controls, ExCR resulted in reduced AF severity, burden and recurrence, and improvements in mental components of HRQoL and exercise capacity. The effects of ExCR were consistent across trials, irrespective of AF subtype, participant characteristics and the nature of the ExCR intervention (including dose and setting). Although there was no significant difference between ExCR versus controls in the risk of all cause mortality and the composite outcome of serious adverse events, the number of events across trials was low and therefore underpowered.

Studies have suggested that maintaining sinus rhythm improves HRQoL, and patients can experience distress when trying to handle symptoms of AF, such as palpitations, dyspnoea and fatigue.^{39 40} As AF recurrence was not available in previous meta-analyses, we are unable to compare our AF recurrence findings with previous systematic reviews. However, recent observational

evidence has reported ExCR to be associated with a lower risk of AF progression compared with matched non-exercise controls (OR 0.74, 95% CI 0.66 to 0.83).⁴¹ This effect size is consistent with our pooled reduction in AF recurrence following ExCR (RR 0.68, 95% CI 0.53 to 0.89). Given that recurrent AF is associated with increased healthcare utilisation, greater AF burden and higher rates of progression to persistent AF, this reduction is clinically meaningful.⁴² A relative risk reduction of 32% suggests that structured exercise interventions may have a key role in improving symptom control, reducing the need for additional medical interventions (eg, repeat cardioversion or ablation) and ultimately enhancing long term disease management in AF patients.

Although we observed an improvement in the mental health component of the SF-36, the change in the physical health component did not reach statistical significance. This may suggest that, as a generic tool, the SF-36 is less sensitive to clinically meaningful, disease specific changes in HRQoL.^{43 44} This interpretation is supported by the improvements noted in several AFSS domains in our current analysis, particularly symptom severity and AF burden following ExCR. A recent non-Cochrane systematic

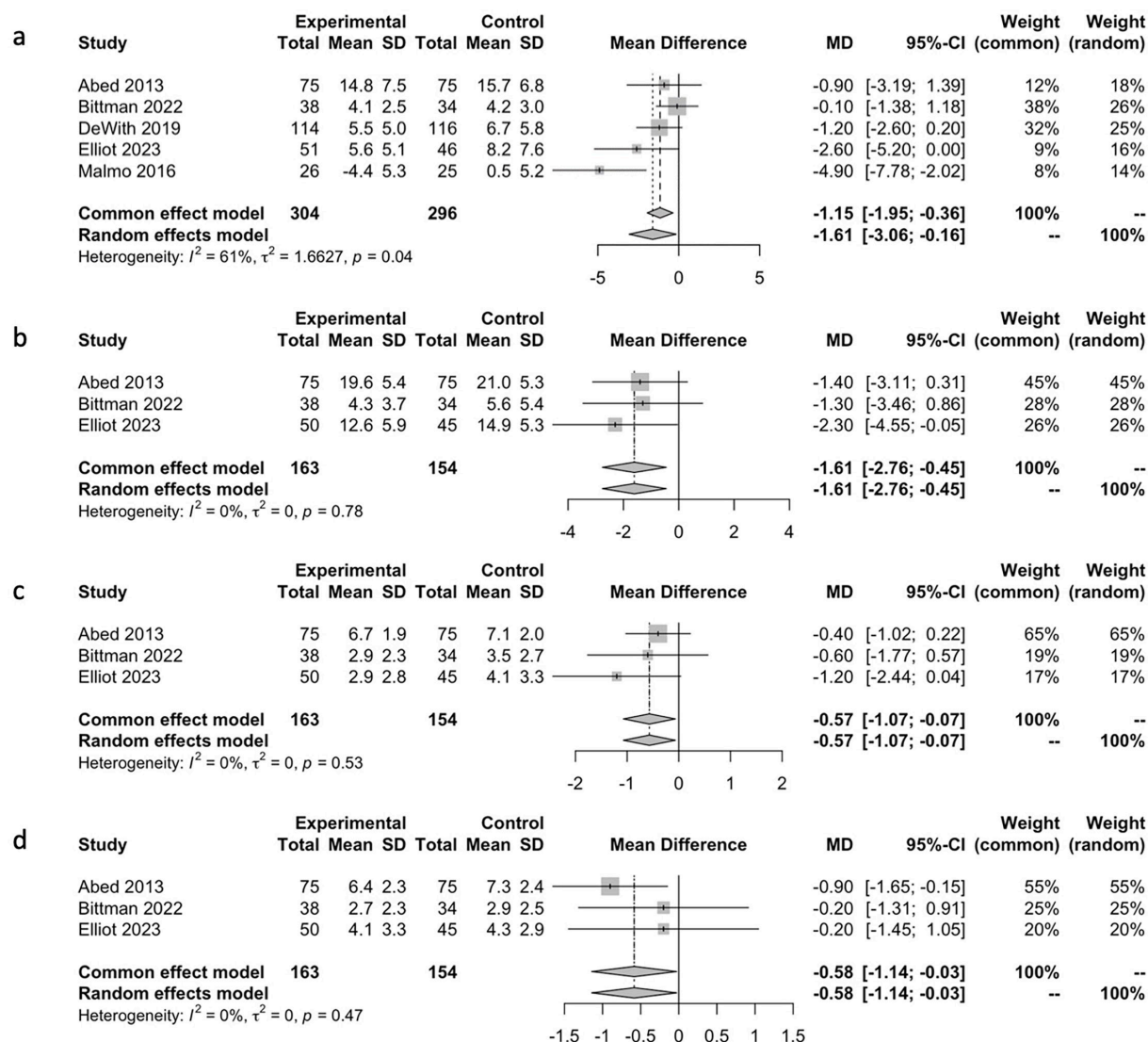


Figure 4 Forest plot: effects of exercise based cardiac rehabilitation versus control exercise based cardiac rehabilitation versus control for atrial fibrillation symptom severity (a), atrial fibrillation (AF) burden (b), episode frequency (c) and episode duration (d) in patients with AF.

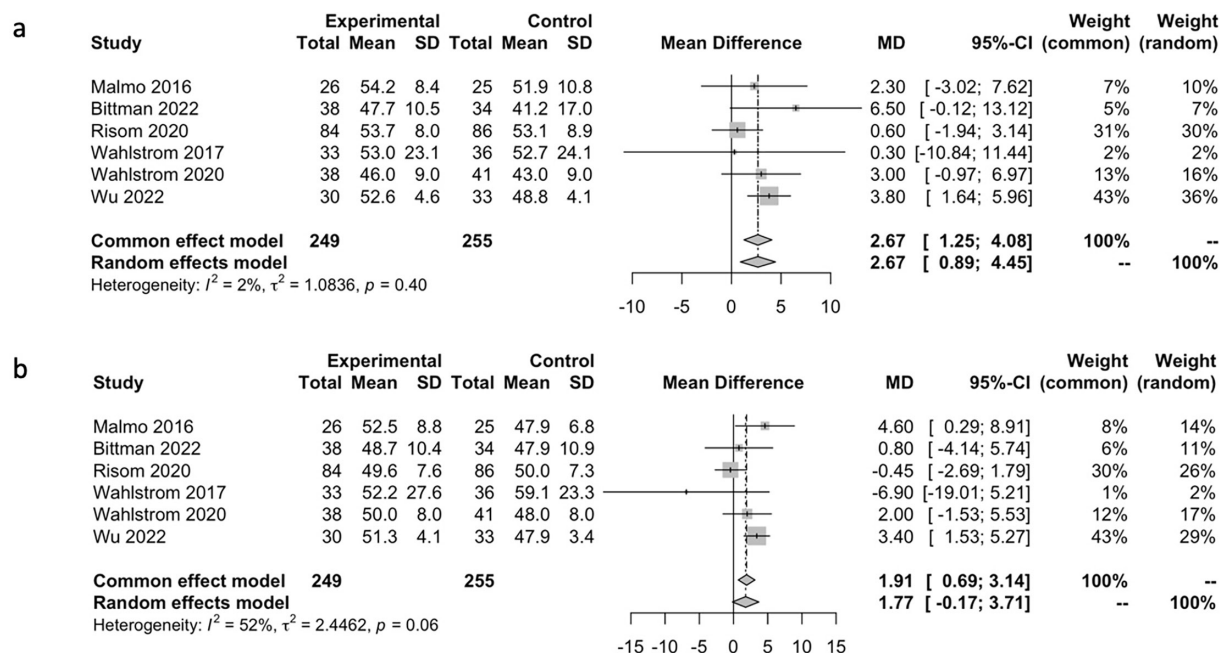


Figure 5 Forest plot: effects of exercise based cardiac rehabilitation versus control for SF-36 mental component score (a) and SF-36 physical component score (b) in patients with atrial fibrillation.

review of 12 studies further supports this finding, showing that aerobic interventions, such as aerobic interval training, Qigong, yoga and ExCR, were associated with only small improvements in mental and physical components of SF-36 for patients with AF.⁴⁵

The findings of this review provide an important update on the evidence seen previously in the 2017 Cochrane systematic review including six RCTs in 421 participants¹⁰ and the 2018 Smart *et al* review and meta-analysis with nine RCTs in 959 participants.⁴⁶ Consistent with the present update, both of these previous reviews reported improvements in exercise capacity, as expected. However, with access to a larger body of evidence, our meta-analysis results show greater precision of exercise capacity effects following ExCR. Our results have clinical significance. For example, the demonstrated improvement in mean pooled VO_2 peak of 3.18 mL/kg/min is not only statistically significant (95% CI 1.05 to 5.31) but also clinically important, given a 1 mL/kg/min improvement has traditionally been accepted as a clinically meaningful change.^{47 48}

Various mechanisms have been proposed for how exercise based interventions can lead to improvement in AF participant outcomes.^{11 49} While improvements in traditional cardiovascular risk factors likely account for a substantial proportion of the benefit, additional mechanisms may directly impact AF burden and recurrence. Exercise training promotes favourable atrial remodelling, including reduced atrial stiffness and fibrosis, which may help limit AF substrate development, although further research is needed.⁵⁰ Enhanced vagal tone, a well documented adaptation to endurance training, has been implicated in both AF promotion and suppression, depending on the extent of autonomic remodelling.^{49 51} Moderate intensity exercise within ExCR programmes may optimise autonomic balance, preserving heart rate variability and parasympathetic benefits. Additionally, exercise induced improvements in vascular function and haemodynamics, including enhanced endothelial function, arterial compliance and left atrial haemodynamics, may reduce AF morbidity by improving overall cardiovascular efficiency.^{50 52 53}

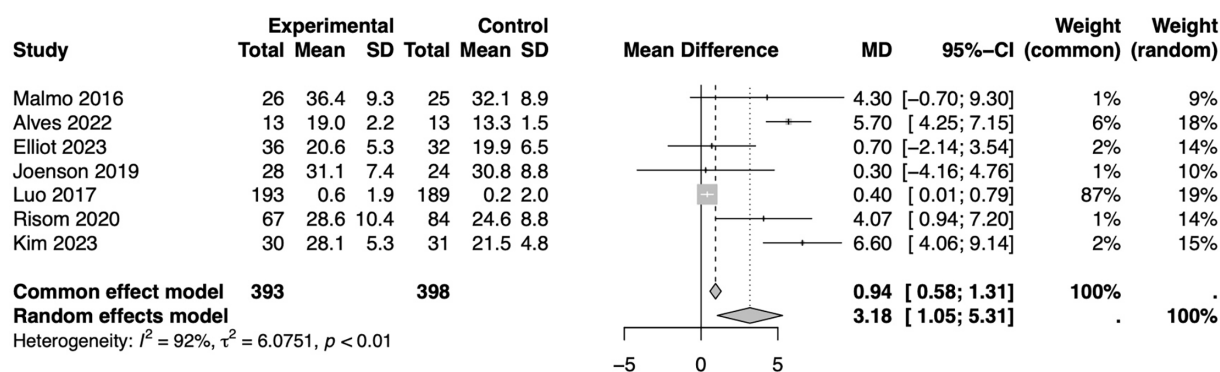


Figure 6 Forest plot: effects of exercise based cardiac rehabilitation versus control for cardiorespiratory fitness presented as maximal oxygen consumption (VO_2 peak mL/kg/min) in patients with atrial fibrillation, except for Luo 2019, where pre-post change scores are presented.

Table 4 Meta-regression results

Regression variable	Serious adverse events (p value)	Exercise capacity (p value)
Publication year	0.291	0.395
Continent	0.781	0.0053 (South America; 0.029)
Exercise only versus comprehensive rehabilitation	0.838	0.137
Risk of bias	0.525	0.189
Sample size	0.345	0.077
Mean age	0.799	0.910
% of men	0.969	0.147
AF subtype	0.217	0.540
Catheter ablation	0.279	0.099
DOACs (published 2013 onwards after release of DOACs in 2010)	0.287	0.104
Exercise type (aerobic, resistance, mixed, IMT)	0.577	0.295
Exercise duration	0.546	0.231
Exercise frequency	0.488	0.938
Exercise programme length	0.597	0.695
Aerobic exercise dose	0.662	0.154
Setting (home, centre or hybrid)	0.195	0.127
Longest follow-up (months)	0.380	0.019
Aerobic exercise intensity (light, moderate or vigorous)	0.675	0.416
Univariate meta-regression was completed in R using meta and metafor packages. Studies with zero events were omitted from model fitting.		
AF, atrial fibrillation; DOACs, direct oral anticoagulants; IMT, inspiratory muscle training.		

While the mechanisms underlying the benefits of ExCR are multifaceted, they may also extend beyond improvements in physiological measures. Exercise training is known to have psychological benefits, including reductions in anxiety and depression, which are prevalent in individuals with AF and can exacerbate symptom perception. Collectively, these adaptations provide plausible mechanisms through which ExCR not only supports general cardiovascular health and wellbeing but also gives AF specific benefits, including reductions in AF recurrence post-treatment and improvements in self-reported AF burden and severity.

While regular physical activity and exercise training reduces AF risk, a U shaped relationship has been observed, with excessive endurance exercise potentially increasing AF prevalence, particularly among master athletes.⁴⁹ The mechanisms underlying this phenomenon may include atrial remodelling, heightened vagal tone and exercise induced inflammation.⁴⁹ However, it is important to note that this subgroup represents a very small fraction of the overall AF population. Although we do not expect this subgroup to be attending ExCR, the ESC Sports Cardiology Guidelines recognise the need for individualised exercise prescriptions in this context.⁵⁴ The guideline recommends that if no AF recurrence occurs within 1 month of an ablation procedure, sports activity may be resumed. However, it is not known whether continuation of sports after successful ablation might progress the disease process. Therefore, no firm recommendation can be made about the safe dose of activity level following ablation. Thus ExCR may provide safe and effective physical activity for AF patients across the

spectrum, but more tailored support is needed with those who have developed athletic AF.

Strengths and limitations

This is, to our knowledge, the most comprehensive contemporary review to date of RCT evidence assessing the impact of ExCR. However, our review has several potential limitations. Risk of bias varied substantially, with several trials inadequately reporting trial methods of random sequence generation, allocation concealment and intention-to-treat analysis. The number of trials reporting primary outcomes of interest were few. Furthermore, given the nature of ExCR, participant blinding is impossible and therefore patient reported outcomes such as SF-36 and AFSS are subject to reporting bias. Most included trials were relatively small and had a short term follow-up period. The number of reported deaths and serious adverse events was small, which substantially reduced certainty. There was considerable clinical heterogeneity across trials both in terms of patient population and the nature of ExCR. Most participants were men, and better female representation is needed in future trials. We considered heterogeneity by undertaking more conservative random effects meta-analyses. There was potential evidence of publication bias with funnel plot asymmetry for exercise capacity measures.

Implications

Although GRADE and RTSA assessment indicated that additional trials would improve certainty and precision, there is now a body of evidence showing the beneficial impact of ExCR in terms of AF severity, burden and recurrence, as well as HRQoL and exercise capacity. Although further research is needed, meta-regression indicated that the effects were consistent across a range of patient and intervention characteristics (for exercise capacity). AF management guidelines should reflect this updated evidence base by recommending ExCR alongside drug and ablation therapies for patients with AF. The commissioning and funding of future evidence generation for ExCR should prioritise well conducted large multicentre RCTs, recruiting representative AF populations and adequately powered for AF-specific outcomes, including recurrence and clinical events.

CONCLUSIONS

This comprehensive systematic review with meta-analysis, meta-regression and trial sequential analysis of RCTs demonstrated that participation in ExCR reduced disease recurrence, severity and burden, and improved exercise capacity and HRQoL for participants with AF.

Author affiliations

¹Cardiovascular Health Research Group, Research Institute for Sport and Exercise Sciences, Liverpool John Moores University, Liverpool, UK

²Liverpool Centre for Cardiovascular Science, University of Liverpool, Liverpool John Moores University, and Liverpool Heart & Chest Hospital, Liverpool, UK

³MRC/CSO Social and Public Health Sciences Unit & Robertson Centre for Biostatistics, University of Glasgow, Glasgow, UK

⁴Department of Cardiology, University Hospital, Copenhagen, Denmark

⁵Department of Clinical Medicine, Faculty Health and Medical Sciences, University of Copenhagen, Copenhagen, Denmark

⁶Department of Cardiology and Internal Medicine, Amager and Hvidovre University Hospital, Copenhagen, Denmark

⁷Department of Cardiology, Copenhagen University Hospital-Rigshospitalet, Copenhagen, Denmark

⁸Copenhagen Trial Unit, Centre for Clinical Intervention Research, Copenhagen University Hospital, Rigshospitalet, Copenhagen, Denmark

⁹Danish Knowledge Centre for Rehabilitation and Palliative Care, University of Southern Denmark and Odense University Hospital, Nyborg, Denmark

¹⁰School of Health and Social Care, Edinburgh Napier University, Edinburgh, UK

Acknowledgements We thank Charlene Bridges for running the initial database searches.

Contributors BJB and RST drafted the manuscript. Meta-analysis, meta-regression, and trial sequential analysis (RTSA) were completed in R by BJB. BJB, LL, DAL, SR, CJF and RST identified the included trials, extracted the data and assessed bias from the trials in duplicate. All authors have reviewed, revised and approved the final version of the review for publication. BJB is the guarantor.

Funding The authors have not declared a specific grant for this research from any funding agency in the public, commercial or not-for-profit sectors.

Competing interests BJB has received investigator initiated research grants from BMS/Pfizer, Huawei EU and consultancy fees from Huawei EU. DAL has received investigator initiated educational grants from Bristol-Myers Squibb (BMS) and Pfizer, has been a speaker for Bayer, Boehringer Ingelheim and BMS/Pfizer, and has consulted for BMS and Boehringer Ingelheim. LN has received investigator initiated grants from BMS Pfizer and Daiichi Sankyo. JHS has received institutional research grant from Medtronic outside this work, speaker fees from Medtronic and is a member of a Medtronic advisory board.

Patient consent for publication Not applicable.

Provenance and peer review Not commissioned; externally peer reviewed.

Data availability statement Data sharing not applicable as no datasets generated and/or analysed for this study. Meta-analysis of aggregate data.

Supplemental material This content has been supplied by the author(s). It has not been vetted by BMJ Publishing Group Limited (BMJ) and may not have been peer-reviewed. Any opinions or recommendations discussed are solely those of the author(s) and are not endorsed by BMJ. BMJ disclaims all liability and responsibility arising from any reliance placed on the content. Where the content includes any translated material, BMJ does not warrant the accuracy and reliability of the translations (including but not limited to local regulations, clinical guidelines, terminology, drug names and drug dosages), and is not responsible for any error and/or omissions arising from translation and adaptation or otherwise.

ORCID iD

Benjamin JR Buckley <http://orcid.org/0000-0002-1479-8872>

REFERENCES

- Lippi G, Sanchis-Gomar F, Cervellin G. Global epidemiology of atrial fibrillation: An increasing epidemic and public health challenge. *Int J Stroke* 2021;16:217–21.
- Hindricks G, Potpara T, Dagres N, et al. 2020 ESC Guidelines for the diagnosis and management of atrial fibrillation developed in collaboration with the European Association for Cardio-Thoracic Surgery (EACTS): The Task Force for the diagnosis and management of atrial fibrillation of the European Society of Cardiology (ESC) developed with the special contribution of the European Heart Rhythm Association (EHRA) of the ESC. *Eur Heart J* 2021;42:373–498.
- Lip GYH. The ABC pathway: an integrated approach to improve AF management. *Nat Rev Cardiol* 2017;14:627–8.
- BACPR. BACPR standards and core components 2023 edition. 2023.
- Taylor RS, Dalal HM, McDonagh STJ. The role of cardiac rehabilitation in improving cardiovascular outcomes. *Nat Rev Cardiol* 2022;19:180–94.
- Buckley BJR, Lip GYH. Current Concepts: Comprehensive 'Cardiovascular Health' Rehabilitation-An Integrated Approach to Improve Secondary Prevention and Rehabilitation of Cardiovascular Diseases. *Thromb Haemost* 2022;122:1966–8.
- Dibben G, Faulkner J, Oldridge N, et al. Exercise-based cardiac rehabilitation for coronary heart disease. *Cochrane Database Syst Rev* 2021;11:CD001800.
- Long L, Anderson L, He J, et al. Exercise-based cardiac rehabilitation for stable angina: systematic review and meta-analysis. *Open Heart* 2019;6:e000989.
- Cheung CC, Nattel S, Macle L, et al. Management of Atrial Fibrillation in 2021: An Updated Comparison of the Current CCS/CHRS, ESC, and AHA/ACC/HRS Guidelines. *Can J Cardiol* 2021;37:1607–18.
- Risom SS, Zwisler A-D, Johansen PP, et al. Exercise-based cardiac rehabilitation for adults with atrial fibrillation. *Cochrane Database Syst Rev* 2017;2:CD001197.
- Buckley BJR, Risom SS, Boidin M, et al. Atrial Fibrillation Specific Exercise Rehabilitation: Are We There Yet? *J Pers Med* 2022;12:610.
- Higgins J, et al. *Cochrane handbook for systematic reviews of interventions*. in Cochrane, 2022.
- Page MJ, McKenzie JE, Bossuyt PM, et al. The PRISMA 2020 statement: an updated guideline for reporting systematic reviews. *BMJ* 2021;372:n71.
- R Core Team. R: a language and environment for statistical computing. Vienna Austria R Foundation for Statistical Computing; 2023.
- Savović J, Jones H, Altman D, et al. Influence of reported study design characteristics on intervention effect estimates from randomised controlled trials: combined analysis of meta-epidemiological studies. *Health Technol Assess* 2012;16:1–82.
- Wood L, Egger M, Gluud LL, et al. Empirical evidence of bias in treatment effect estimates in controlled trials with different interventions and outcomes: meta-epidemiological study. *BMJ* 2008;336:601–5.
- Schünemann H, Hill S, Guyatt G, et al. The GRADE approach and Bradford Hill's criteria for causation. *J Epidemiol Community Health* 2011;65:392–5.
- Wetterslev J, Jakobsen JC, Gluud C. Trial Sequential Analysis in systematic reviews with meta-analysis. *BMC Med Res Methodol* 2017;17:39.
- De With RR, Rienstra M, Smit MD, et al. Targeted therapy of underlying conditions improves quality of life in patients with persistent atrial fibrillation: results of the RACE 3 study. *Europace* 2019;21:563–71.
- Joensen AM, Dinesen PT, Svendsen LT, et al. Effect of patient education and physical training on quality of life and physical exercise capacity in patients with paroxysmal or persistent atrial fibrillation: A randomized study. *J Rehabil Med* 2019;51:442–50.
- Hegbom F, Sire S, Heldal M, et al. Short-term exercise training in patients with chronic atrial fibrillation: effects on exercise capacity, AV conduction, and quality of life. *J Cardiopulm Rehabil* 2006;26:24–9.
- Malmö V, Nes BM, Amundsen BH, et al. Aerobic Interval Training Reduces the Burden of Atrial Fibrillation in the Short Term: A Randomized Trial. *Circulation* 2016;133:466–73.
- Osbaek PS, Mourier M, Kjaer A, et al. A randomized study of the effects of exercise training on patients with atrial fibrillation. *Am Heart J* 2011;162:1080–7.
- Pippa L, Manzoli L, Corti I, et al. Functional capacity after traditional Chinese medicine (qi gong) training in patients with chronic atrial fibrillation: a randomized controlled trial. *Prev Cardiol* 2007;10:22–5.
- Risom SS, Zwisler A-D, Sibillitz KL, et al. Cardiac Rehabilitation for Patients Treated for Atrial Fibrillation With Ablation Has Long-Term Effects: 12- and 24-Month Follow-up Results From the Randomized CopenHeart_{trial}. *Arch Phys Med Rehabil* 2020;101:1877–86.
- Wahlström M, Rosenqvist M, Medin J, et al. MediYoga as a part of a self-management programme among patients with paroxysmal atrial fibrillation - a randomised study. *Eur J Cardiovasc Nurs* 2020;19:74–82.
- Wahlström M, Rydell Karlsson M, Medin J, et al. Effects of yoga in patients with paroxysmal atrial fibrillation - a randomized controlled study. *Eur J Cardiovasc Nurs* 2017;16:57–63.
- Zeren M, Demir R, Yigit Z, et al. Effects of inspiratory muscle training on pulmonary function, respiratory muscle strength and functional capacity in patients with atrial fibrillation: a randomized controlled trial. *Clin Rehabil* 2016;30:1165–74.
- Kato M, Ogano M, Mori Y, et al. Exercise-based cardiac rehabilitation for patients with catheter ablation for persistent atrial fibrillation: A randomized controlled clinical trial. *Eur J Prev Cardiol* 2019;26:1931–40.
- Nourmohammadi Z, Khalifehzadeh-Esfahani A, Eftekhari M, et al. The effect of aerobic physical rehabilitation on the quality of life in patients with chronic atrial fibrillation: A randomized controlled clinical trial study. *ARYA Atheroscler* 2019;15:1–8.
- Wu Y, Lin J, Gong B, et al. Cardiac Rehabilitation in Atrial Fibrillation Patients With Left Atrial Appendage Occlusion: A randomized trial. *J Cardiopulm Rehabil Prev* 2022;42:266–71.
- Kim S, Lee S, Han D, et al. One-year Aerobic Interval Training Improves Endothelial Dysfunction in Patients with Atrial Fibrillation: A Randomized Trial. *Intern Med* 2023;62:2465–74.
- Abad HS, Wittert GA, Leong DP, et al. Effect of weight reduction and cardiometabolic risk factor management on symptom burden and severity in patients with atrial fibrillation: a randomized clinical trial. *JAMA* 2013;310:2050–60.
- Elliott AD, Verdicchio CV, Mahajan R, et al. An Exercise and Physical Activity Program in Patients With Atrial Fibrillation: The ACTIVE-AF Randomized Controlled Trial. *JACC Clin Electrophysiol* 2023;9:455–65.
- Alves LS, Bocchi EA, Chizzola PR, et al. Exercise training in heart failure with reduced ejection fraction and permanent atrial fibrillation: A randomized clinical trial. *Heart Rhythm* 2022;19:1058–66.
- Bittman J, Thomson CJ, Lyall LA, et al. Effect of an Exercise and Nutrition Program on Quality of Life in Patients With Atrial Fibrillation: The Atrial Fibrillation Lifestyle Project (ALP). *CJC Open* 2022;4:685–94.
- Bubnova MG, Aronov DM, Makhinova MM, et al. Clinical efficacy of a personalized exercise program in the rehabilitation of patients with atrial fibrillation after radiofrequency ablation. *Russ J Cardiol* 2022;27:5098.
- Luo N, Merrill P, Parikh KS, et al. Exercise Training in Patients With Chronic Heart Failure and Atrial Fibrillation. *J Am Coll Cardiol* 2017;69:1683–91.
- Dąbrowski R, Smolis-Bąk E, Kowalik I, et al. Quality of life and depression in patients with different patterns of atrial fibrillation. *Kardiol Pol* 2010;68:1133–9.
- Thrall G, Lane D, Carroll D, et al. Quality of life in patients with atrial fibrillation: a systematic review. *Am J Med* 2006;119:448.
- Buckley BJR, Harrison SL, Fazio-Eynullayeva E, et al. Association of Exercise-Based Cardiac Rehabilitation with Progression of Paroxysmal to Sustained Atrial Fibrillation. *J Clin Med* 2021;10:435.

- 42 Frausing MHJP, Van De Lande M, Linz D, *et al.* Healthcare utilisation and quality of life according to atrial fibrillation burden, episode frequency and duration. *Heart* 2024;110:1030–9.
- 43 Guyatt GH, Bombardier C, Tugwell PX. Measuring disease-specific quality of life in clinical trials. *CMAJ* 1986;134:889–95.
- 44 Guyatt GH, Feeny DH, Patrick DL. Measuring health-related quality of life. *Ann Intern Med* 1993;118:622–9.
- 45 AbuElkhair A, Boidin M, Buckley BJR, *et al.* Effects of different exercise types on quality of life for patients with atrial fibrillation: a systematic review and meta-analysis. *J Cardiovasc Med (Hagerstown)* 2023;24:87–95.
- 46 Smart NA, King N, Lambert JD, *et al.* Exercise-based cardiac rehabilitation improves exercise capacity and health-related quality of life in people with atrial fibrillation: a systematic review and meta-analysis of randomised and non-randomised trials. *Open Heart* 2018;5:e000880.
- 47 Keteyian SJ, Brawner CA, Savage PD, *et al.* Peak aerobic capacity predicts prognosis in patients with coronary heart disease. *Am Heart J* 2008;156:292–300.
- 48 Pandey A, Kitzman DW. Searching for the Optimal Exercise Training Regimen in Heart Failure With Preserved Ejection Fraction. *JAMA* 2021;325:537–9.
- 49 Buckley BJR, Lip GYH, Thijssen DHJ. The counterintuitive role of exercise in the prevention and cause of atrial fibrillation. *Am J Physiol Heart Circ Physiol* 2020;319:H1051–8.
- 50 Elliott AD, Ariyaratnam J, Howden EJ, *et al.* Influence of exercise training on the left atrium: implications for atrial fibrillation, heart failure, and stroke. *Am J Physiol Heart Circ Physiol* 2023;325:H822–36.
- 51 Korsak A, Kellett DO, Aziz Q, *et al.* Immediate and sustained increases in the activity of vagal preganglionic neurons during exercise and after exercise training. *Cardiovasc Res* 2023;119:2329–41.
- 52 Green DJ, Hopman MTE, Padilla J, *et al.* Vascular Adaptation to Exercise in Humans: Role of Hemodynamic Stimuli. *Physiol Rev* 2017;97:495–528.
- 53 Qin S, Boidin M, Buckley BJR, *et al.* Endothelial dysfunction and vascular maladaptation in atrial fibrillation. *Eur J Clin Invest* 2021;51:e13477.
- 54 Pelliccia A, Sharma S, Gati S, *et al.* 2020 ESC Guidelines on sports cardiology and exercise in patients with cardiovascular disease. *Eur Heart J* 2021;42:17–96.